

Landing price of tunas 2021 (Main fishing ports in Japan)

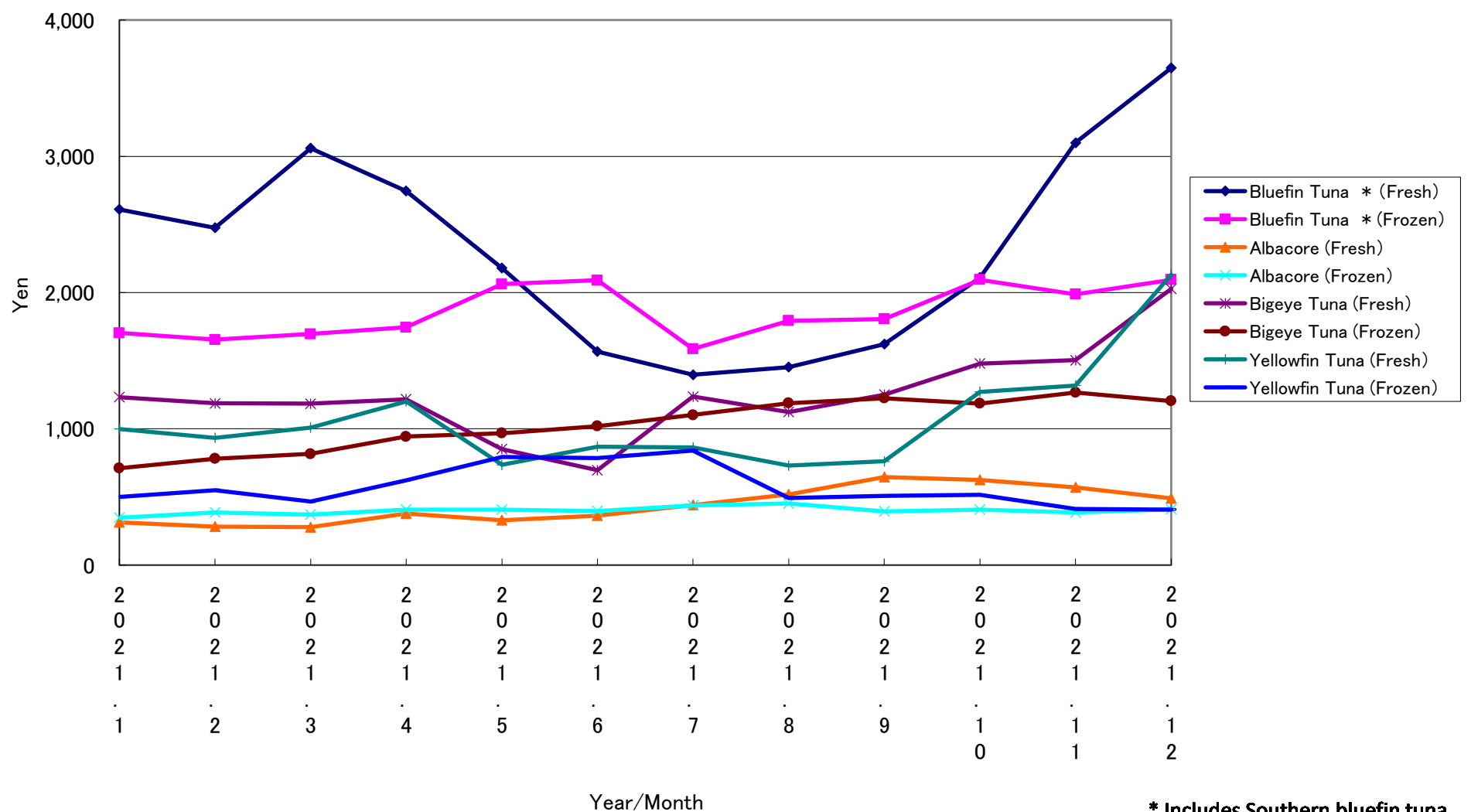
Year/Month	Bluefin Tuna *		Albacore		Bigeye Tuna		Yellowfin Tuna	
	(Fresh)	(Frozen)	(Fresh)	(Frozen)	(Fresh)	(Frozen)	(Fresh)	(Frozen)
2021. 1	2,609	1,703	314	347	1,233	711	999	501
2021. 2	2,475	1,654	284	386	1,187	781	935	550
2021. 3	3,059	1,695	279	371	1,184	816	1,008	466
2021. 4	2,746	1,745	380	408	1,216	943	1,201	622
2021. 5	2,179	2,061	329	407	851	967	735	793
2021. 6	1,567	2,090	363	397	697	1,019	869	785
2021. 7	1,397	1,586	441	439	1,236	1,101	865	840
2021. 8	1,452	1,793	519	452	1,123	1,188	731	492
2021. 9	1,621	1,806	646	394	1,250	1,225	761	508
2021. 10	2,110	2,093	626	408	1,479	1,187	1,271	515
2021. 11	3,099	1,987	571	386	1,503	1,267	1,317	413
2021. 12	3,648	2,093	491	410	2,027	1,204	2,131	407

* Includes Southern bluefin tuna.

Unit: Yen/Kg

Source: Ministry of Agriculture, Forestry and Fisheries of Japan.

Landing price of tunas (Main fishing ports in Japan)



* Includes Southern bluefin tuna.