

Landing price of tunas 2020 (Main fishing ports in Japan)

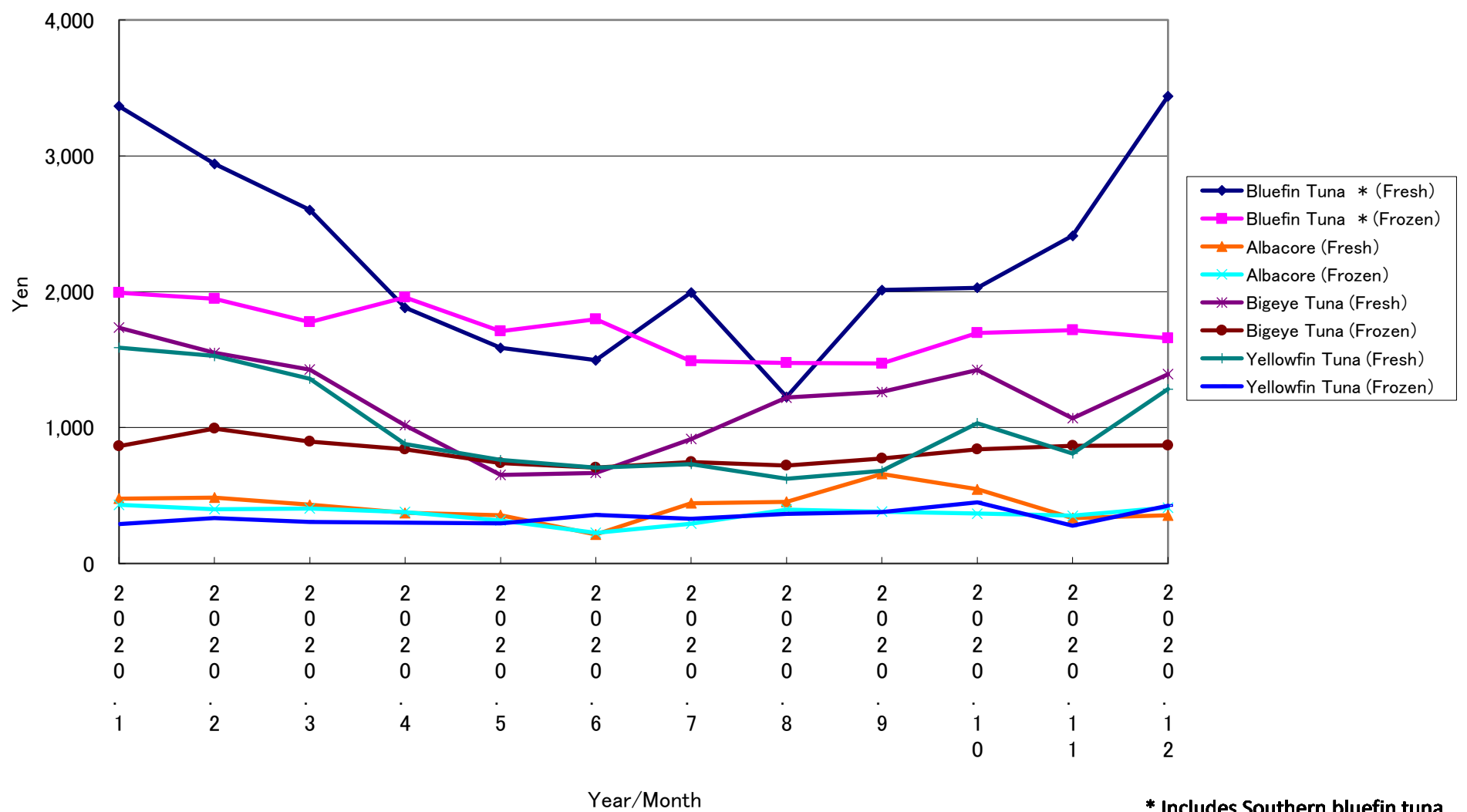
Year/Month	Bluefin Tuna *		Albacore		Bigeye Tuna		Yellowfin Tuna	
	(Fresh)	(Frozen)	(Fresh)	(Frozen)	(Fresh)	(Frozen)	(Fresh)	(Frozen)
2020. 1	3,365	1,993	478	432	1,735	864	1,588	291
2020. 2	2,941	1,948	485	399	1,550	993	1,527	333
2020. 3	2,601	1,777	432	405	1,426	897	1,359	307
2020. 4	1,882	1,959	372	378	1,017	840	879	301
2020. 5	1,587	1,709	355	317	652	739	762	295
2020. 6	1,496	1,798	214	226	666	706	706	359
2020. 7	1,994	1,488	443	292	916	747	732	329
2020. 8	1,226	1,477	455	398	1,221	722	624	366
2020. 9	2,012	1,472	659	382	1,262	773	681	378
2020. 10	2,028	1,697	546	367	1,425	840	1,032	450
2020. 11	2,412	1,717	334	352	1,069	867	810	278
2020. 12	3,439	1,658	354	411	1,393	870	1,283	426

* Includes Southern bluefin tuna.

Unit: Yen/Kg

Source: Ministry of Agriculture, Forestry and Fisheries of Japan.

Landing price of tunas (Main fishing ports in Japan)



* Includes Southern bluefin tuna.