

Landing price of tunas 2018 (Main fishing ports in Japan)

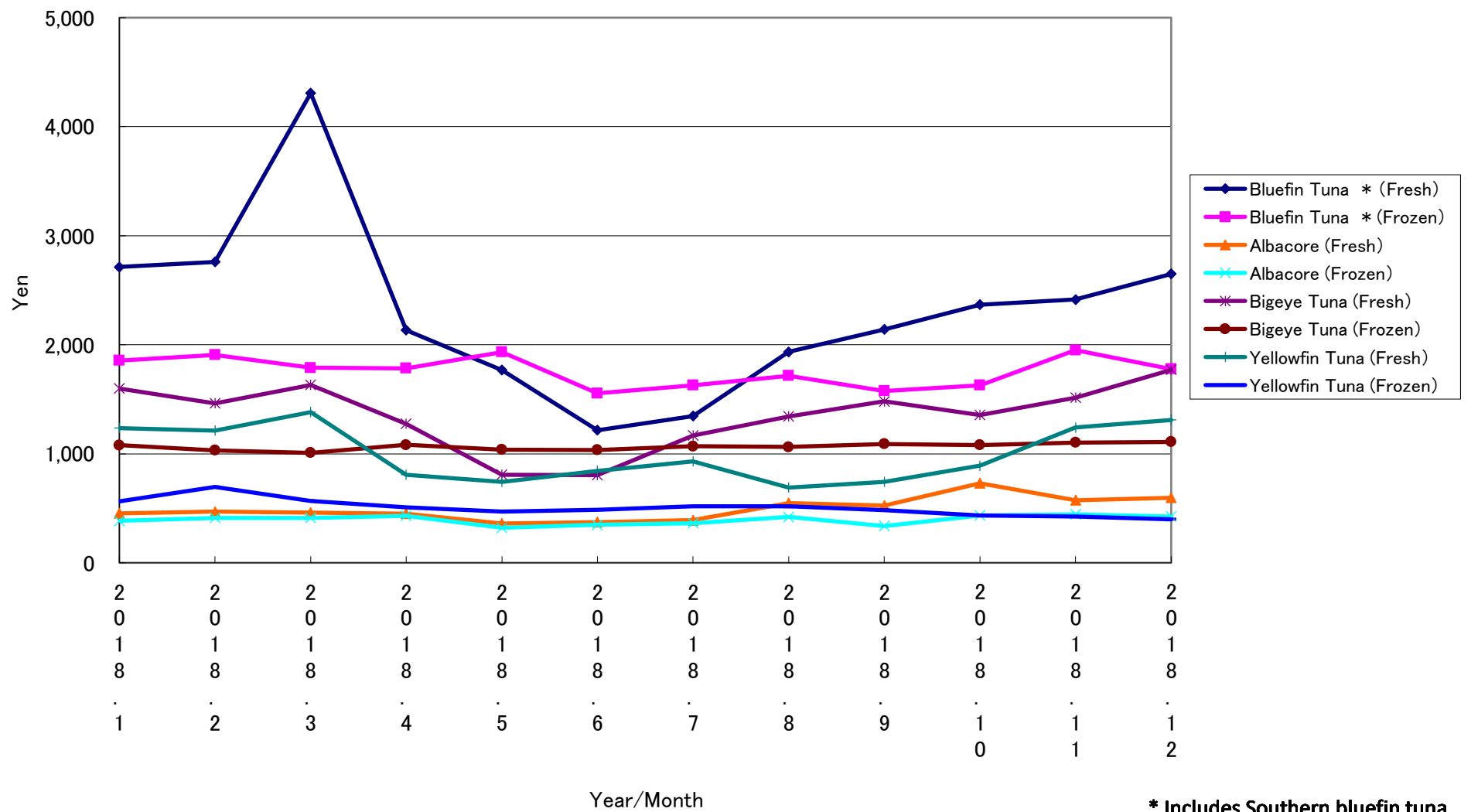
Year/Month	Bluefin Tuna *		Albacore		Bigeye Tuna		Yellowfin Tuna	
	(Fresh)	(Frozen)	(Fresh)	(Frozen)	(Fresh)	(Frozen)	(Fresh)	(Frozen)
2018. 1	2,712	1,854	453	385	1,600	1,079	1,237	563
2018. 2	2,760	1,906	469	412	1,462	1,031	1,212	696
2018. 3	4,308	1,789	461	412	1,632	1,008	1,382	568
2018. 4	2,134	1,784	452	431	1,274	1,081	808	508
2018. 5	1,767	1,932	360	321	807	1,038	742	470
2018. 6	1,216	1,555	373	349	804	1,035	843	486
2018. 7	1,345	1,627	391	362	1,167	1,068	932	517
2018. 8	1,935	1,716	547	420	1,342	1,062	690	517
2018. 9	2,141	1,576	526	337	1,480	1,089	743	484
2018. 10	2,368	1,628	729	434	1,355	1,080	890	434
2018. 11	2,415	1,951	575	444	1,515	1,103	1,240	424
2018. 12	2,649	1,777	596	425	1,770	1,109	1,311	399

* Includes Southern bluefin tuna.

Unit: Yen/Kg

Source: Ministry of Agriculture, Forestry and Fisheries of Japan.

Landing price of tunas (Main fishing ports in Japan)



* Includes Southern bluefin tuna.