

## Landing price of tunas 2017 (Main fishing ports in Japan)

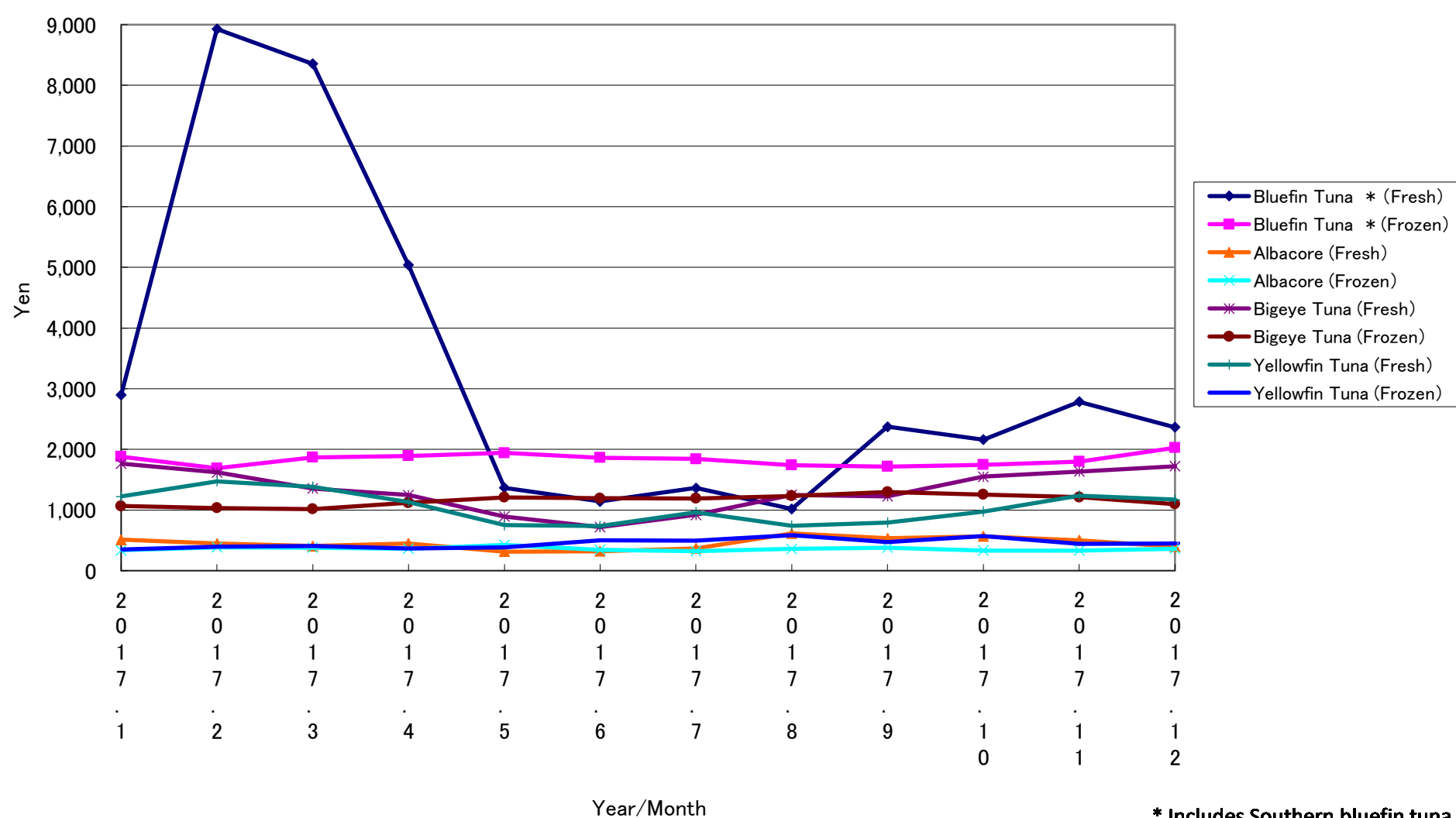
Year/Month	Bluefin Tuna *		Albacore		Bigeye Tuna		Yellowfin Tuna	
	(Fresh)	(Frozen)	(Fresh)	(Frozen)	(Fresh)	(Frozen)	(Fresh)	(Frozen)
2017. 1	2,897	1,880	510	335	1,765	1,065	1,224	349
2017. 2	8,928	1,689	446	386	1,620	1,033	1,472	399
2017. 3	8,355	1,869	406	378	1,356	1,015	1,383	407
2017. 4	5,040	1,893	449	360	1,246	1,118	1,130	368
2017. 5	1,364	1,941	313	425	893	1,207	750	386
2017. 6	1,141	1,863	322	342	719	1,193	737	499
2017. 7	1,362	1,842	367	322	920	1,190	964	495
2017. 8	1,018	1,741	615	358	1,247	1,231	742	586
2017. 9	2,374	1,716	534	378	1,228	1,297	793	470
2017. 10	2,159	1,747	568	331	1,549	1,256	974	570
2017. 11	2,786	1,797	503	334	1,636	1,211	1,236	445
2017. 12	2,366	2,026	399	360	1,723	1,095	1,171	451

\* Includes Southern bluefin tuna.

Unit: Yen/Kg

Source: Ministry of Agriculture, Forestry and Fisheries of Japan.

Landing price of tunas (Main fishing ports in Japan)



\* Includes Southern bluefin tuna.