

Landing price of tunas 2015 (Main fishing ports in Japan)

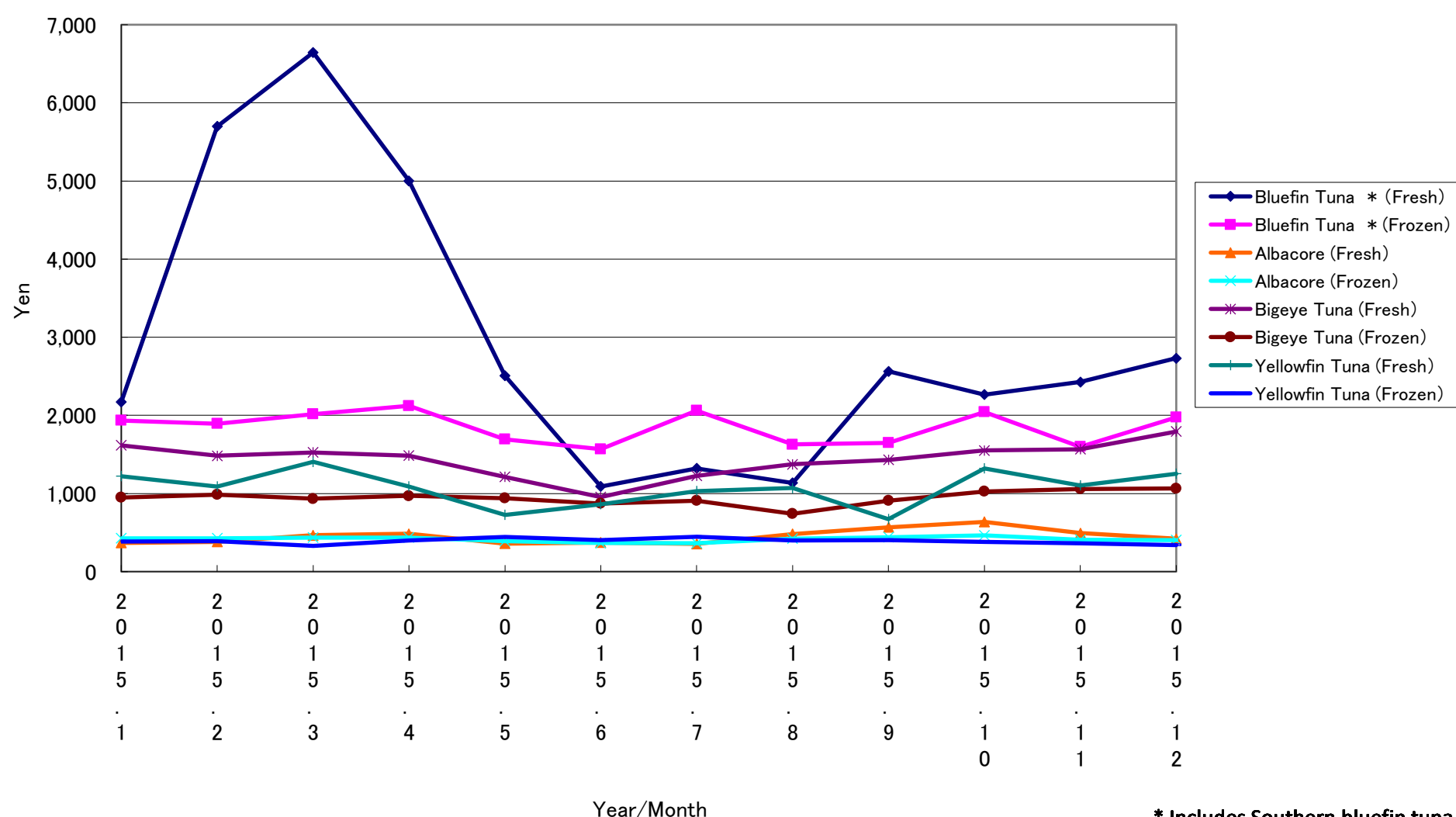
Year/Month	Bluefin Tuna *		Albacore		Bigeye Tuna		Yellowfin Tuna	
	(Fresh)	(Frozen)	(Fresh)	(Frozen)	(Fresh)	(Frozen)	(Fresh)	(Frozen)
2015. 1	2,170	1,934	367	427	1,617	949	1,221	387
2015. 2	5,699	1,894	381	427	1,482	985	1,089	389
2015. 3	6,645	2,017	465	436	1,525	933	1,406	330
2015. 4	5,001	2,123	483	436	1,485	969	1,091	399
2015. 5	2,505	1,695	358	389	1,212	940	727	442
2015. 6	1,089	1,568	373	365	954	872	863	402
2015. 7	1,323	2,061	356	364	1,224	908	1,032	446
2015. 8	1,134	1,628	483	422	1,373	740	1,069	400
2015. 9	2,562	1,648	567	441	1,432	907	672	403
2015. 10	2,266	2,042	637	464	1,551	1,026	1,321	383
2015. 11	2,427	1,598	492	408	1,567	1,057	1,103	362
2015. 12	2,732	1,976	420	405	1,793	1,065	1,252	342

* Includes Southern bluefin tuna.

Unit: Yen/Kg

Source: Ministry of Agriculture, Forestry and Fisheries of Japan.

Landing price of tunas (Main fishing ports in Japan)



* Includes Southern bluefin tuna.