

Landing price of tunas 2013 (Main fishing ports in Japan)

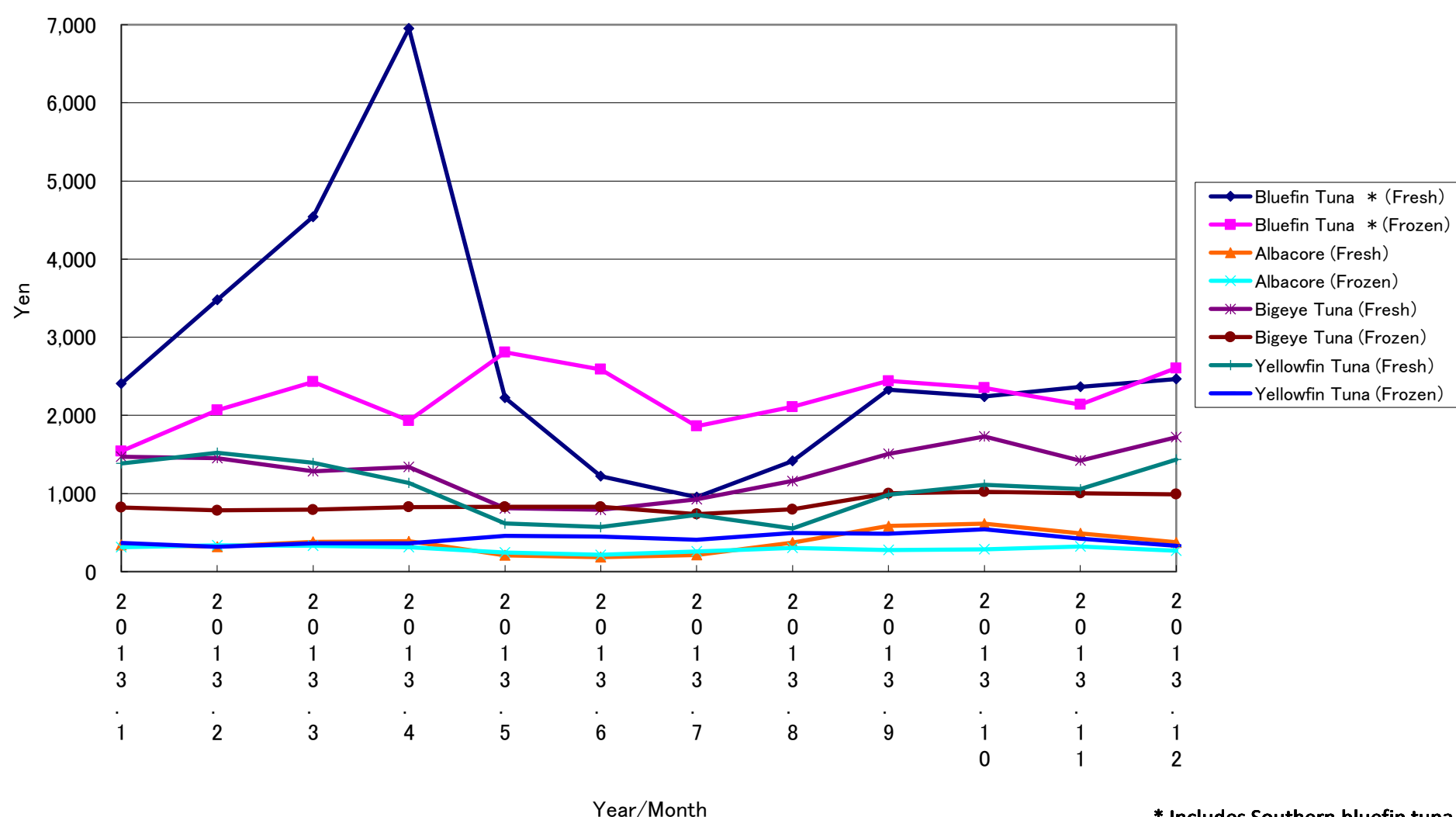
Year/Month	Bluefin Tuna *		Albacore		Bigeye Tuna		Yellowfin Tuna	
	(Fresh)	(Frozen)	(Fresh)	(Frozen)	(Fresh)	(Frozen)	(Fresh)	(Frozen)
2013. 1	2,407	1,541	341	313	1,471	820	1,385	365
2013. 2	3,479	2,065	320	337	1,452	783	1,522	318
2013. 3	4,542	2,429	383	330	1,286	792	1,391	364
2013. 4	6,952	1,931	388	312	1,340	827	1,134	365
2013. 5	2,224	2,808	207	246	810	829	615	459
2013. 6	1,220	2,588	185	216	792	829	570	448
2013. 7	953	1,863	213	258	926	736	725	408
2013. 8	1,417	2,109	372	304	1,160	797	553	494
2013. 9	2,330	2,440	583	278	1,506	1,001	983	485
2013. 10	2,241	2,352	614	286	1,730	1,022	1,111	542
2013. 11	2,367	2,137	491	321	1,422	1,002	1,056	422
2013. 12	2,467	2,604	375	267	1,721	988	1,436	331

* Includes Southern bluefin tuna.

Unit: Yen/Kg

Source: Ministry of Agriculture, Forestry and Fisheries of Japan.

Landing price of tunas (Main fishing ports in Japan)



* Includes Southern bluefin tuna.