

Landing price of tunas 2011 (Main fishing ports in Japan)

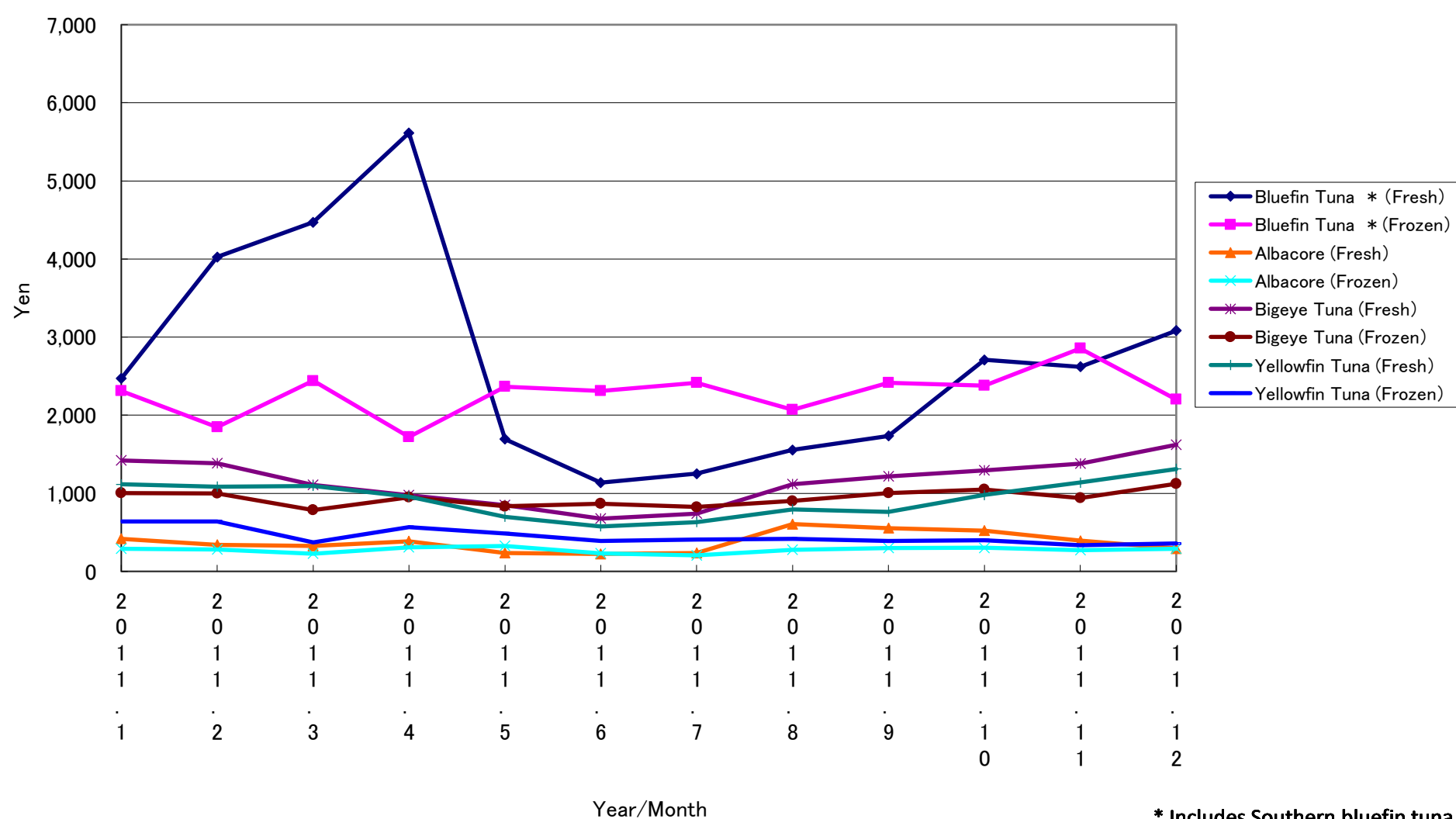
Year/Month	Bluefin Tuna *		Albacore		Bigeye Tuna		Yellowfin Tuna	
	(Fresh)	(Frozen)	(Fresh)	(Frozen)	(Fresh)	(Frozen)	(Fresh)	(Frozen)
2011. 1	2,471	2,313	418	291	1,420	1,004	1,115	639
2011. 2	4,024	1,847	341	283	1,386	999	1,086	639
2011. 3	4,469	2,440	326	227	1,109	785	1,094	370
2011. 4	5,615	1,722	386	309	975	949	958	566
2011. 5	1,693	2,367	236	326	848	833	700	484
2011. 6	1,137	2,310	224	232	676	868	576	390
2011. 7	1,251	2,416	236	206	741	823	631	406
2011. 8	1,555	2,070	606	278	1,117	901	793	417
2011. 9	1,734	2,417	552	298	1,215	1,003	764	390
2011. 10	2,708	2,379	522	302	1,293	1,049	979	400
2011. 11	2,619	2,854	393	272	1,380	938	1,138	335
2011. 12	3,083	2,202	293	292	1,622	1,122	1,311	356

* Includes Southern bluefin tuna.

Unit: Yen/Kg

Source: Ministry of Agriculture, Forestry and Fisheries of Japan.

Landing price of tunas (Main fishing ports in Japan)



* Includes Southern bluefin tuna.