

Landing price of tunas 2010 (Main fishing ports in Japan)

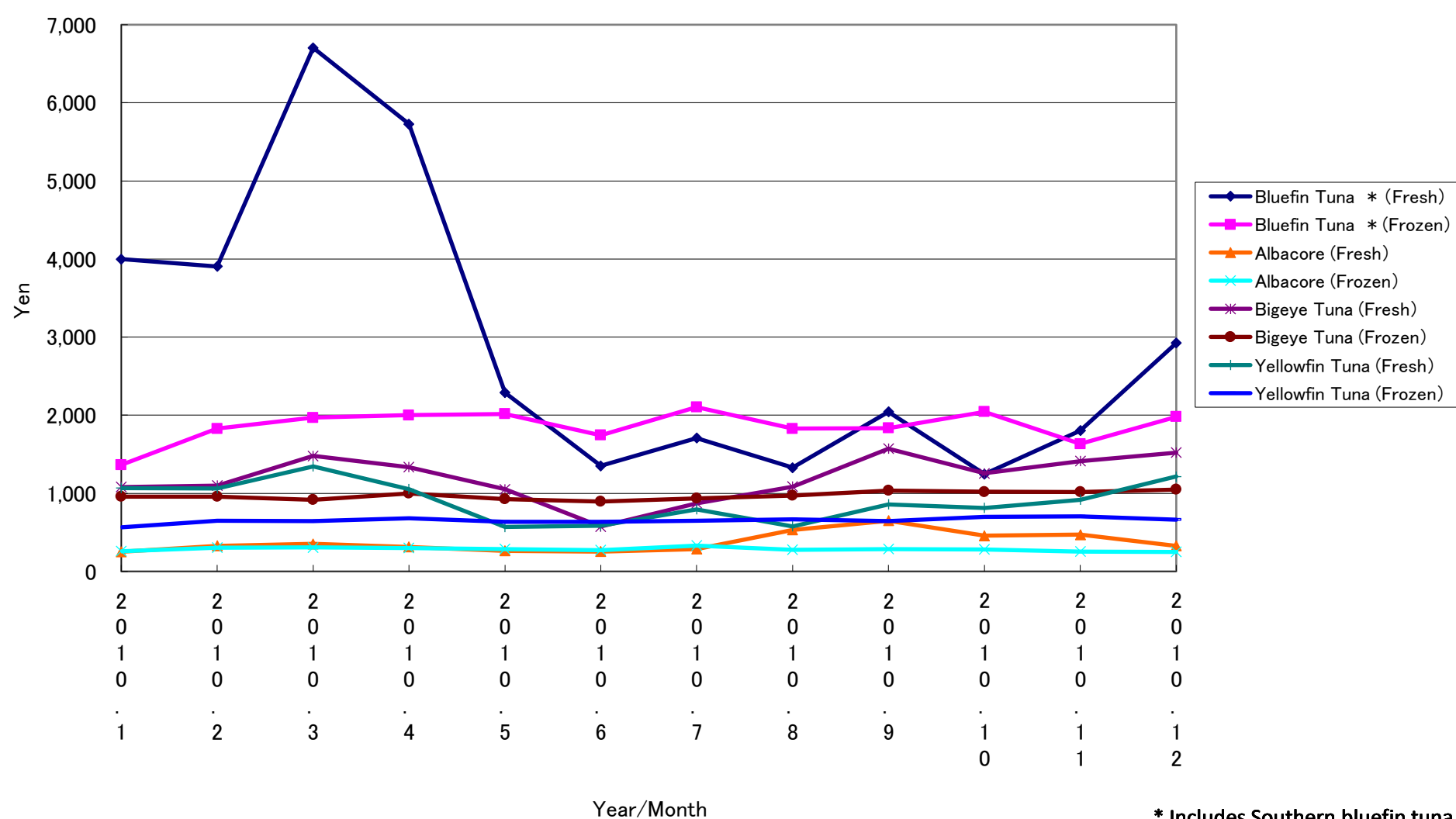
Year/Month	Bluefin Tuna *		Albacore		Bigeye Tuna		Yellowfin Tuna	
	(Fresh)	(Frozen)	(Fresh)	(Frozen)	(Fresh)	(Frozen)	(Fresh)	(Frozen)
2010. 1	3,998	1,364	252	259	1,081	958	1,066	564
2010. 2	3,904	1,827	328	304	1,099	959	1,064	650
2010. 3	6,704	1,968	352	306	1,478	916	1,344	643
2010. 4	5,728	2,000	312	301	1,335	999	1,055	681
2010. 5	2,288	2,016	264	285	1,050	927	569	636
2010. 6	1,351	1,743	253	273	575	895	585	637
2010. 7	1,709	2,104	286	330	872	934	795	650
2010. 8	1,328	1,827	531	275	1,084	972	578	666
2010. 9	2,042	1,834	648	285	1,571	1,036	857	643
2010. 10	1,246	2,044	456	282	1,255	1,019	812	699
2010. 11	1,802	1,632	469	255	1,413	1,018	917	705
2010. 12	2,925	1,978	328	249	1,521	1,047	1,215	661

* Includes Southern bluefin tuna.

Unit: Yen/Kg

Source: Ministry of Agriculture, Forestry and Fisheries of Japan.

Landing price of tunas (Main fishing ports in Japan)



* Includes Southern bluefin tuna.