

Landing price of tunas 2009 (Main fishing ports in Japan)

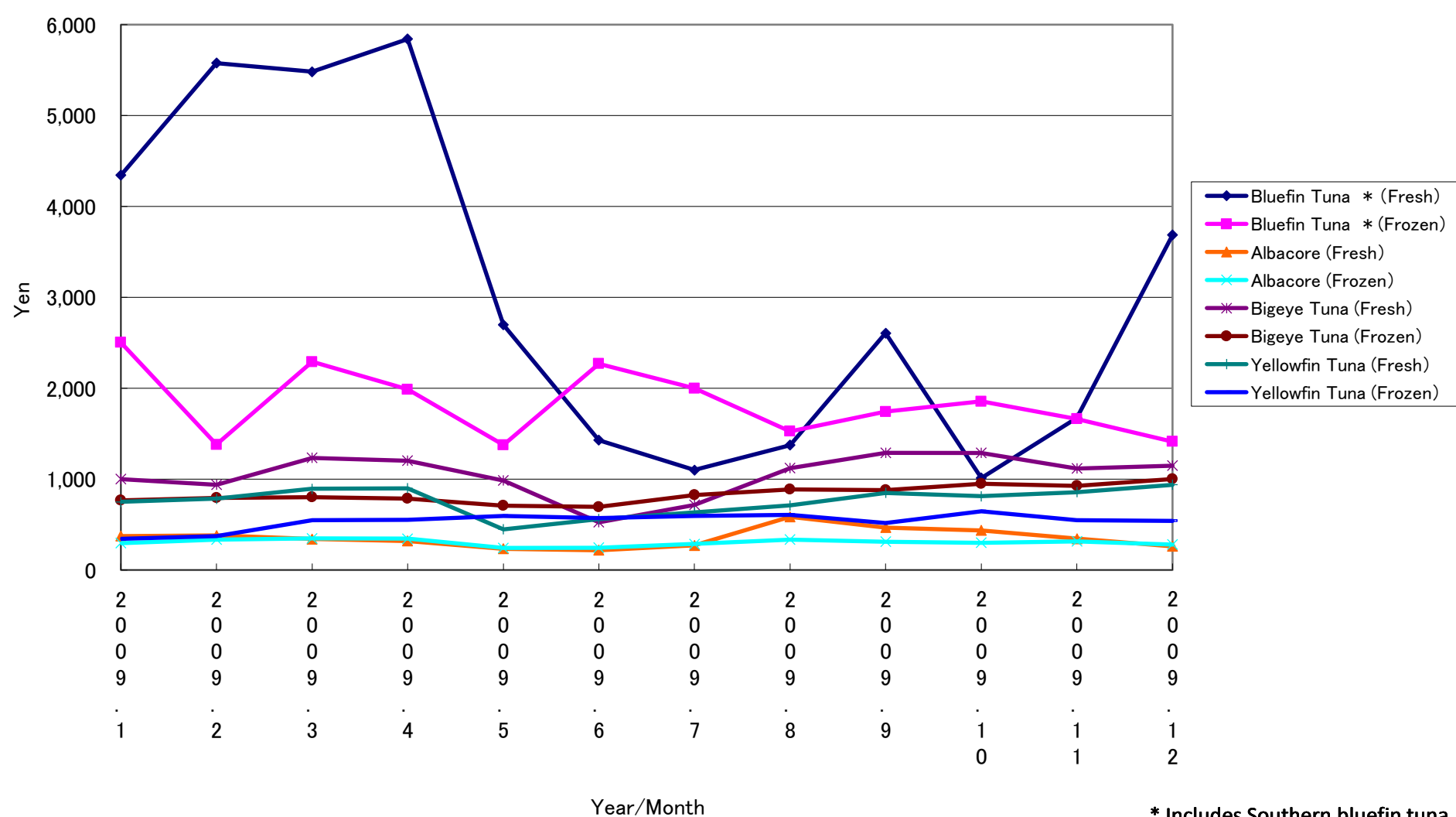
Year/Month	Bluefin Tuna *		Albacore		Bigeye Tuna		Yellowfin Tuna	
	(Fresh)	(Frozen)	(Fresh)	(Frozen)	(Fresh)	(Frozen)	(Fresh)	(Frozen)
2009. 1	4,344	2,503	374	295	1,001	766	749	343
2009. 2	5,576	1,380	379	334	939	794	784	372
2009. 3	5,482	2,290	341	348	1,234	801	893	549
2009. 4	5,841	1,987	319	344	1,203	786	898	551
2009. 5	2,698	1,376	233	243	985	709	447	595
2009. 6	1,428	2,269	217	246	525	695	560	573
2009. 7	1,099	1,998	270	286	717	825	635	594
2009. 8	1,374	1,526	585	336	1,122	886	710	608
2009. 9	2,606	1,742	466	311	1,289	879	849	518
2009. 10	1,012	1,854	437	301	1,287	950	811	646
2009. 11	1,672	1,661	344	316	1,117	925	857	547
2009. 12	3,686	1,413	262	281	1,149	1,001	937	542

* Includes Southern bluefin tuna.

Unit: Yen/Kg

Source: Ministry of Agriculture, Forestry and Fisheries of Japan.

Landing price of tunas (Main fishing ports in Japan)



* Includes Southern bluefin tuna.