

Landing price of tunas 2008 (Main fishing ports in Japan)

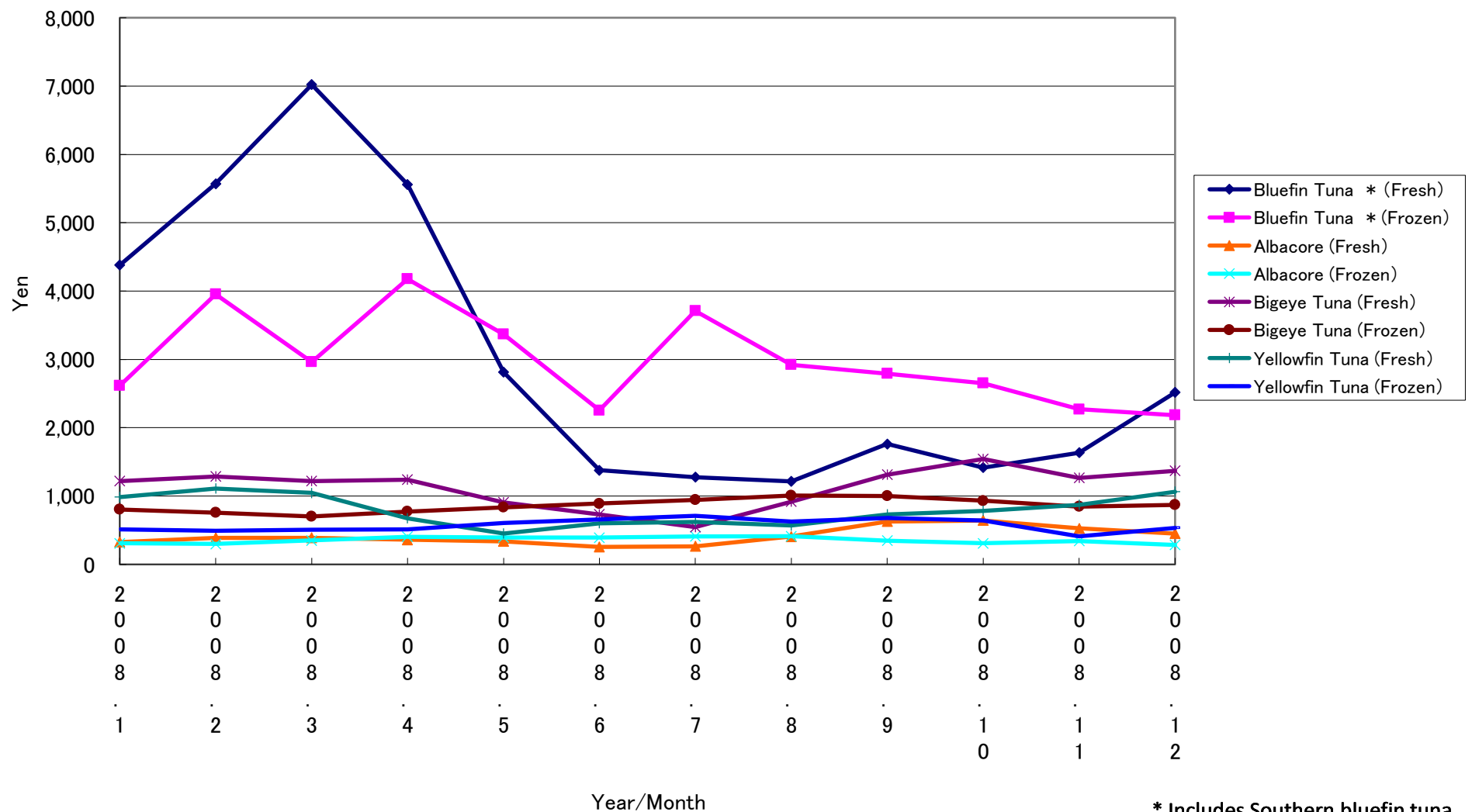
Year/Month	Bluefin Tuna *		Albacore		Bigeye Tuna		Yellowfin Tuna	
	(Fresh)	(Frozen)	(Fresh)	(Frozen)	(Fresh)	(Frozen)	(Fresh)	(Frozen)
2008. 1	4,379	2,617	326	308	1,218	805	985	512
2008. 2	5,570	3,954	389	298	1,288	759	1,110	490
2008. 3	7,021	2,964	390	350	1,220	702	1,045	506
2008. 4	5,560	4,176	360	404	1,240	774	673	515
2008. 5	2,811	3,367	339	395	908	835	452	606
2008. 6	1,378	2,254	256	391	732	890	602	656
2008. 7	1,278	3,710	265	410	546	944	622	711
2008. 8	1,215	2,921	407	413	920	1,008	568	626
2008. 9	1,761	2,792	629	349	1,314	1,001	730	681
2008. 10	1,415	2,650	642	309	1,543	932	782	645
2008. 11	1,635	2,270	527	341	1,267	844	870	411
2008. 12	2,518	2,183	453	285	1,371	870	1,064	536

* Includes Southern bluefin tuna.

Unit: Yen/Kg

Source: Ministry of Agriculture, Forestry and Fisheries of Japan.

Landing price of tunas (Main fishing ports in Japan)



* Includes Southern bluefin tuna.