

Landing price of tunas 2007 (Main fishing ports in Japan)

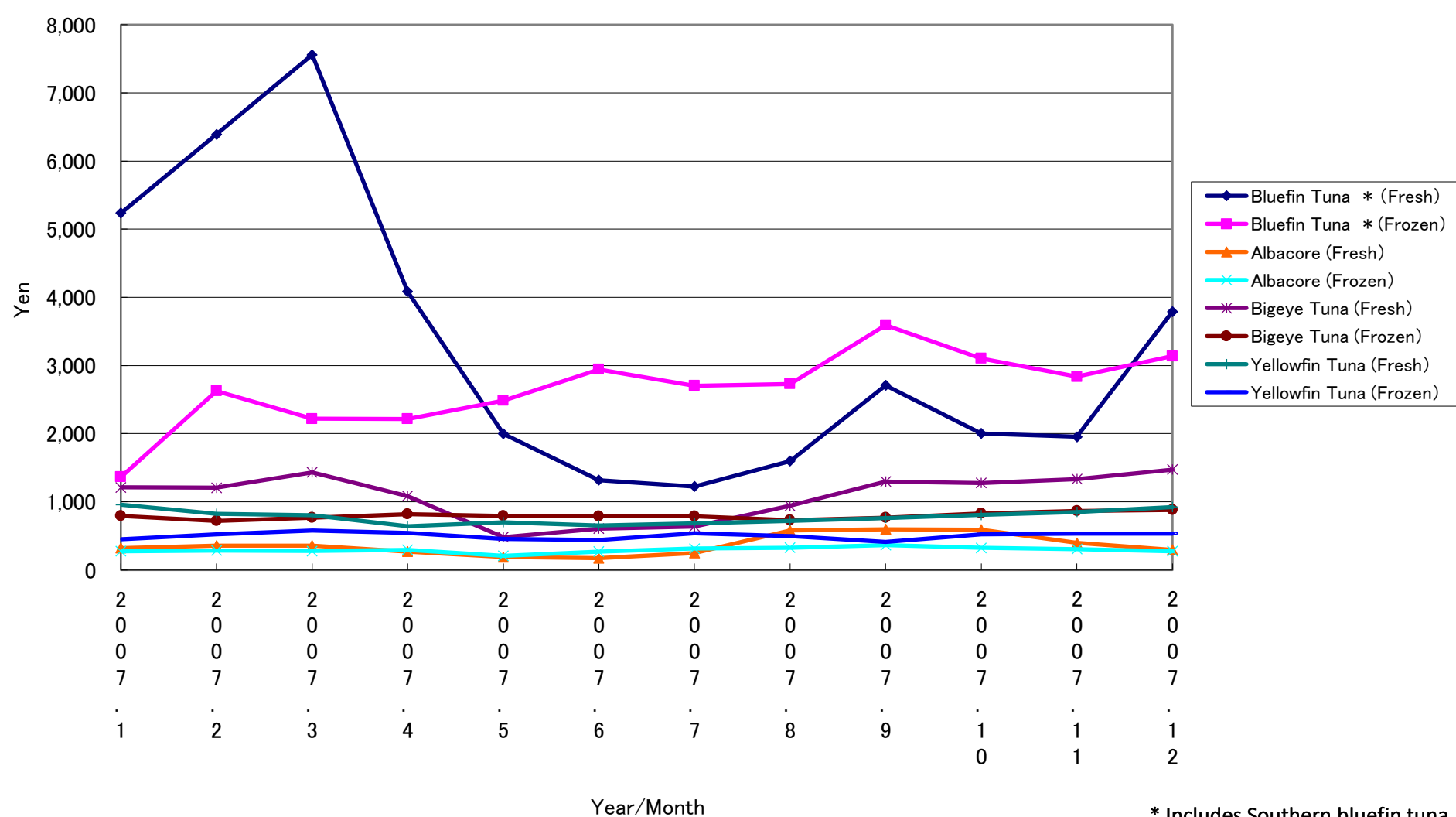
Year/Month	Bluefin Tuna *		Albacore		Bigeye Tuna		Yellowfin Tuna	
	(Fresh)	(Frozen)	(Fresh)	(Frozen)	(Fresh)	(Frozen)	(Fresh)	(Frozen)
2007. 1	5,236	1,363	321	275	1,212	792	958	452
2007. 2	6,391	2,624	358	285	1,206	720	824	521
2007. 3	7,558	2,219	358	278	1,432	769	801	579
2007. 4	4,084	2,215	268	296	1,085	821	642	542
2007. 5	1,997	2,486	189	208	482	793	699	457
2007. 6	1,317	2,942	174	270	608	790	653	439
2007. 7	1,224	2,705	248	314	638	787	686	539
2007. 8	1,598	2,729	582	327	942	732	720	499
2007. 9	2,709	3,591	597	365	1,297	769	764	412
2007. 10	2,004	3,104	591	324	1,275	830	807	525
2007. 11	1,953	2,835	397	306	1,334	867	851	534
2007. 12	3,791	3,136	296	274	1,472	881	924	533

* Includes Southern bluefin tuna.

Unit: Yen/Kg

Source: Ministry of Agriculture, Forestry and Fisheries of Japan.

Landing price of tunas (Main fishing ports in Japan)



* Includes Southern bluefin tuna.