

Landing price of tunas 2006 (Main fishing ports in Japan)

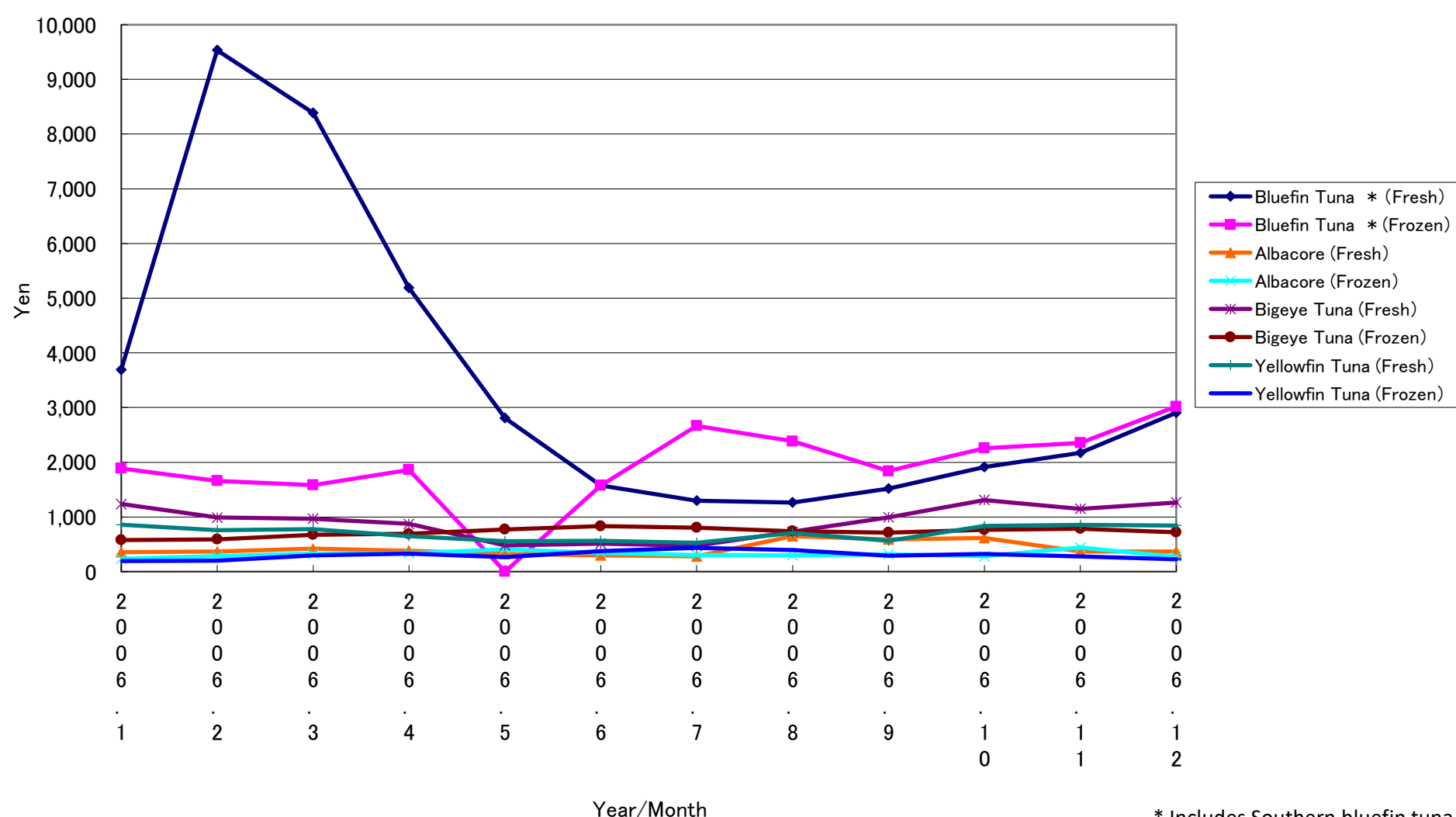
Year/Month	Bluefin Tuna *		Albacore		Bigeye Tuna		Yellowfin Tuna	
	(Fresh)	(Frozen)	(Fresh)	(Frozen)	(Fresh)	(Frozen)	(Fresh)	(Frozen)
2006. 1	3,694	1,887	356	236	1,236	577	858	194
2006. 2	9,533	1,660	366	285	989	589	757	200
2006. 3	8,388	1,582	419	328	967	673	779	297
2006. 4	5,188	1,862	382	336	872	690	647	329
2006. 5	2,810	-	322	410	479	770	558	262
2006. 6	1,575	1,578	297	342	514	833	566	377
2006. 7	1,295	2,665	280	307	474	804	527	435
2006. 8	1,263	2,383	649	296	730	738	705	394
2006. 9	1,518	1,839	592	320	991	712	565	290
2006. 10	1,912	2,256	618	282	1,308	766	833	324
2006. 11	2,173	2,356	370	442	1,150	783	855	281
2006. 12	2,907	3,020	368	272	1,267	722	845	226

* Includes Southern bluefin tuna.

Unit: Yen/Kg

Source: Ministry of Agriculture, Forestry and Fisheries of Japan.

Landing price of tunas (Main fishing ports in Japan)



* Includes Southern bluefin tuna.